



79" x 157" (2000mm x 4000mm) Heavy-Duty Stone/Glass CNC Router

Item Code: CNCR-SD-2040SA1

Mini Order: 1 set

Average Rating: lb (kg)

[Inquire Now](#)



Overview

Application:

This series of CNC engravers are mainly used for processing many kinds of hard materials such as: marble, granite, glass, floor tiles, and soft metals.

Main Configuration Information

Engraving Area: 79" x 157" (2000 x 4000mm)

Gantry elevation height: 11.8" (300mm)

Maximum traveling speed: 20m/min (NcStudio control system)

Spindle Power: 5.5KW water cooled

Machine Body: One-piece cast iron, water cooling circulation system+spray nozzle+front and back of machine with **pulley gear and water tank**.

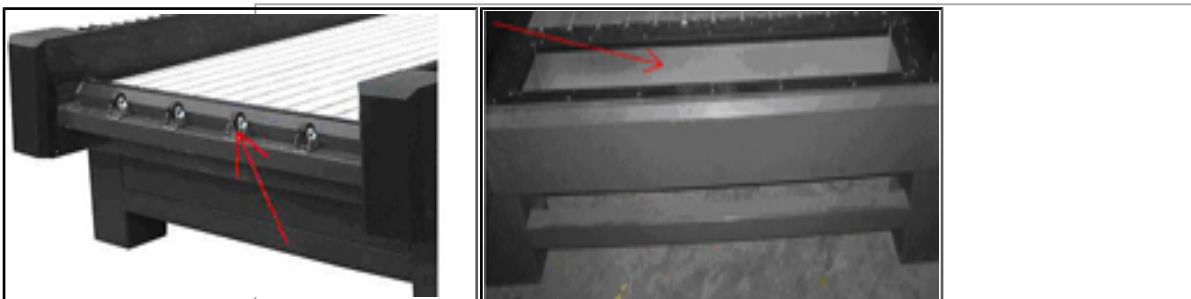
Pulley gear installed in the front of the working table to load stone more easily, it is very convenient for moving stone. Water tank installed at the back of the working table to store water.

X and Y axis adopt helical rack gear wheel transmissions, which increase the machine's intensity and lifespan. Z axis adopts ball screw transmission to ensure precision in the process.

X, Y, Z axis adopt round rods guide structure, both resistant and anticorrosive. High quality fittings make the machine drive smoothly.

NcStudio control system.

15 pcs engraving tools for stone engraving.



Pulley gear	Water tank
-------------	------------

Standard Accessories

image not found userfiles/2011-May/01Clamp and screws	image not found userfiles/2011-May/02Engraving bits	image not found userfiles/2011-May/03PCI Control card	image not found userfiles/2011-May/04Power cable and date cable
Clamp and screws	Engraving bits collets and nuts	PCI Control card	Power cable and date cable
image not found userfiles/2011-May/05Engraving software	image not found userfiles/2011-May/06Shrink tube	image not found userfiles/2011-May/07User Manual	image not found userfiles/2011-May/08Water pump.jpg
Ucancam V8 engraving software	Shirk tube	User Manual	Water pump

Spare Parts

Engraving Tools. Please visit http://www.sign-in-china.com/catalogs/136/Engraving_bits.html to find suitable tools.

Waranty and aftersales service

Comprehensive warranty for one year, except the spare parts.
24-hour technical support by email or telephone.
User-friendly English manual for machine usage and maintenance.

Samples:



Specifications

Specifications	
Operating System	Windows98/2000/XP
Maximum Engraving Area	79" x 157" (2000 x 4000mm)
Spindle Power	5.5KW water-cooled spindle motor
Working Voltage	AC380V, 50Hz
Transducer	5.5KW
Maximum Carving Height	11.8" (300mm)
Maximum Carving Speed	<20m(787")/min
Work Mode	Stepper Axis Y twin motor rack drive
Command	G code, u00 *.plt
Resolution	(mm/Pulse 0.001)
Repeat Precision	0.01mm
Rotational of Spindle	24,000rpm/min
Repetition Precision	0.01mm
Engraving Tool Diameter	12, 6, 4, 3.175mm
Z Axis Driver	Stepper motor
Clamping Unit	8 sets
Software	Ucancam V8
Control System	Ncstudio system
Machine Dimensions	106" x 193" x 59" (2700 x 4900 x 1500mm)
Machine Weight	2800kg
Packaging	Blister pack
Packaging Size	/
Gross Weight	/

Tags

[79" x 157" Glass CNC Router](#) [79" x 157" Stone CNC Router](#) [CNC Router](#) [Glass CNC Router](#) [Stone CNC Router](#)



Copyright © 1999-2012 by Beijing ChinaSigns Information Company Limited All Rights Reserved.

Email:info@sign-in-china.com Tel:+86 132 6410 3286 www.sign-in-china.com