



15" x 15" Economic Pneumatic Double Working Table Heat Press Machine

Item Code: HTM-LCB2-I



FOB Price: **\$877/set**

Mini Order: 1 set

Shipping Weight: ★★★★★

Average Rating: 217.3lb (98.78kg)

[Inquire Now](#)

Overview

- . Adopting auto-moving technology.
- . Pneumatic double working tables for high speed printing.
- . Counterpoint of heating panel and working table is accurate.
- . Surface of heating panel is specially processed to be heat-resisting, smooth, and easy to clean.
- . It's convenient and easy to operate.

Description:

This Pneumatic Double Table Heat Press Machine is featured by its two working tables and air automatic working system. The upper heating board moves automatically and easily. It is very efficient for advertising use and industry use. Heating panel and working tables are specially processed and make the machine work well and transfer images clearly. It's suitable for sublimation and heat transfer printing work. With CE certification and 12 months warranty!

Notice: Color of the machine is variable, and the color is random according to the ones in stock when you buy the machine. Certainly, you can choose the color we have made but need time to finish if it's not in stock. Also, you can customize the color you like but need extra cost and large order.

Related Products



Epson Printer



Heat Transfer Blanks



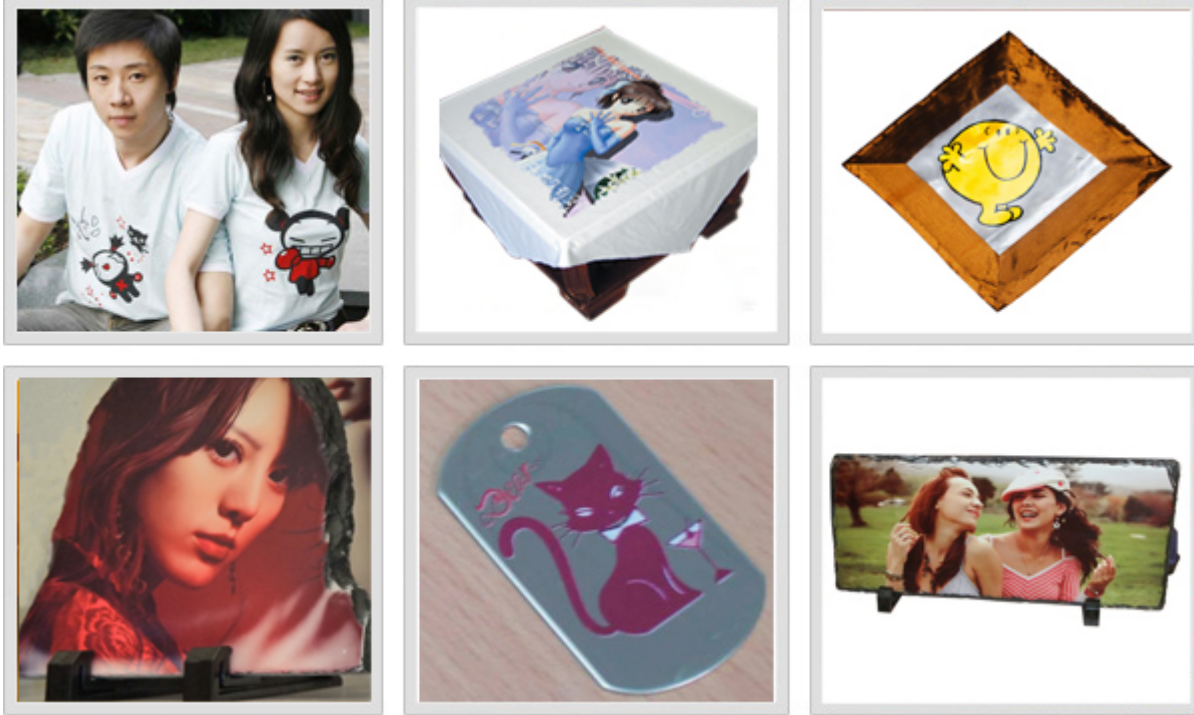
Sublimation Ink



Heat Transfer Paper\Film

Application:

This Pneumatic Double Working-Table Heat Press Machine is widely used in transferring images to T-shirts, fabric bags, pants and others which are made of textile, knitting, non-woven, chemical fibre or cotton materials, and metal sheet, adornment, etc.

Samples**Details**

Certificate	CE
Profile	Adopting auto-moving technology. . Pneumatic double
Power	1400W
Working Size	15.0"×15.0" (380×380mm)
Working Table	Double Working Tables
Operation Method	Automatic
Size	15"*15"
Application	Single Function

Specifications

Working Size	Voltage	Power	Tem.Range	Time Range	Packing Size	G.W.	N.W.
--------------	---------	-------	-----------	------------	--------------	------	------

15.0"x15.0" (380x380mm)	110V/220V	1400W	0-399°C	0-60sec	38.6"x33.1"x23.6" (980x840x600mm)	207.2lb (94kg)	176.4 (80kg)
400x500mm (16.0"x20.0")	110V/220V	1800W	0-399°C	0-60sec	47.6"x33.5"x24.4" (1210x850x620mm)	297.6lb (135kg)	253.5 (115kg)
400x600mm (16.0"x24.0")	110V/220V	2000W	0-399°C	0-60sec	54.3"x33.5"x24.4" (1380x850x620mm)	330.7lb (150kg)	286.6 (130kg)

Tags

[38 x 38 cm Pneumatic Double Working Table Heat Press Machine](#) [15" x 15" Pneumatic Heat Press Machine](#)

QA

Q	Can the upper heating board move automatically and easily?	
A	Yes.	Reply by sign-in-china
Q	Does this machine have CE?	
A	Yes.	Reply by sign-in-china
Q	Is this particular machinery automatic ?	
A	Yes ,it is .	Reply by sign-in-china
Q	Does it require an air compressor?	
A	Yes ,this machine will need the air compressor .	Reply by sign-in-china
Q	Wanted to know if the price quote applies to the (16" X23") 40* 60cm work size?	

A	<p>There are three working size for this machine ,price is different for each .</p> <p style="text-align: right;">Reply by sign-in-china</p>
Q	<p>What type of payment credit do you accept?</p>
A	<p>We are able to accept payment by Paypal .west union , T/T and MONEY GRAM</p> <p style="text-align: right;">Reply by sign-in-china</p>
Q	<p>How many times does it work per hour?</p>
A	<p>This machine can make light color chemical fiber T-shirt ,60pcs /hour. light color 100% cotton T-shirt,240pcs/hour,dark color 100% cotton T-shirt,144pcs/hour.</p> <p style="text-align: right;">Reply by sign-in-china</p>
Q	<p>Do you have the other model machine just like the ITEM-LCB2?It is two working table or two working heads?</p>
A	<p>we have HTM-HP3805D with two working plate.but it is manual not pneumatic.</p> <p style="text-align: right;">Reply by sign-in-china</p>



Copyright © 1999-2012 by Beijing ChinaSigns Information Company Limited All Rights Reserved.

Email:info@sign-in-china.com Tel:+86 132 6410 3286 www.sign-in-china.com