



10ft Straight Pop Up Display(Frame only)-Selflocking Connections

Item Code: SIC-PUD-SLS-341



FOB Price: **\$427/set**

Mini Order: 1 set

Shipping Weight: ★★☆☆

Average Rating: 133.1lb (60.48kg)

[Inquire Now](#)

Overview

Feature:

- 10ft straight pop-up display with self-locking connections with magnetic panels to combine the whole unit.

Includes:

- Straight aluminum frame with selflocking connections
- 7 magnet bars
- 12 plastic strips
- 28.4m magnet tape
- 6 PVC panels
- Hard-plastic case

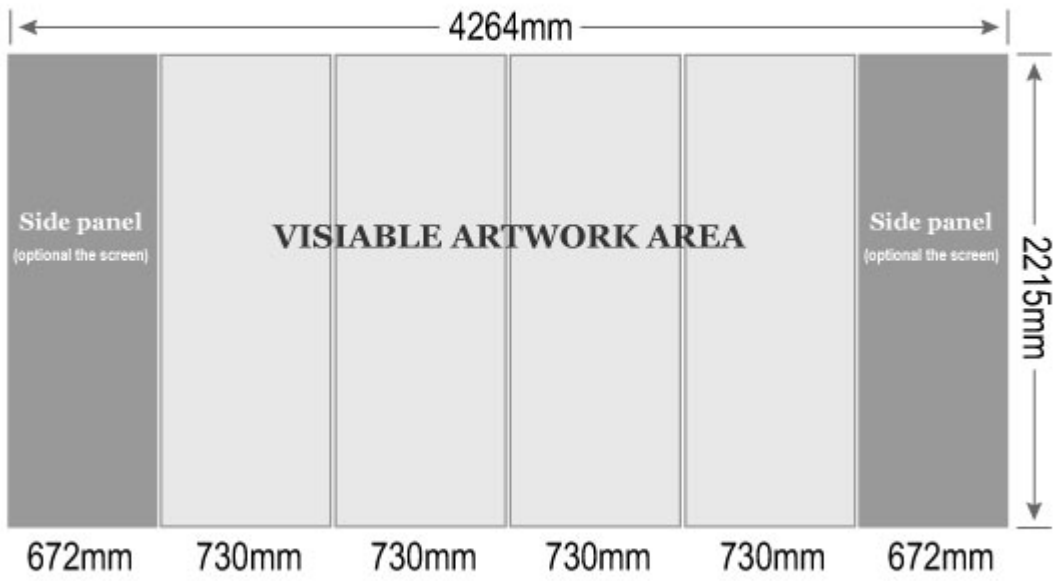
Description:

Place this pop-up display in your booth and instantly you've defined your space and created a warm environment for doing business. It's ten-foot wide and fits neatly into most trade show booths sizes. The trade show booths sets up and folds down in just minutes. Users extend the banner simply by pulling it. The display frame is latched in place after the PC hooks are buckled. The graphics are installed into the brushed aluminum frames using a 3-piece magnetic bar and magnetic tape. Every set of pop-up display comes with a heavy-duty travel case at no extra cost. The travel case includes roller wheels, dual handles, and lock-and-key security.

Application:

This "pop-up display", also known as an exhibit booth, is perfect for displaying 10ft wide graphics at trade shows, conventions and exhibitions.

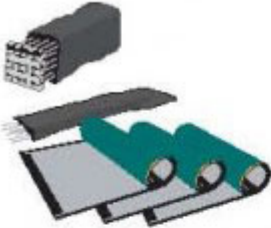
10ft Straight Pop Up Display-Selflocking Connections



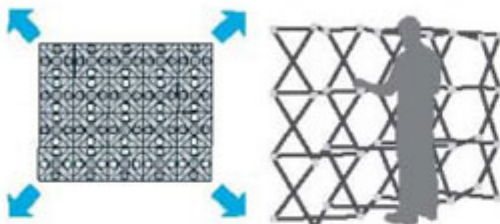
POP UP SYSTEM - SET UP INSTRUCTIONS



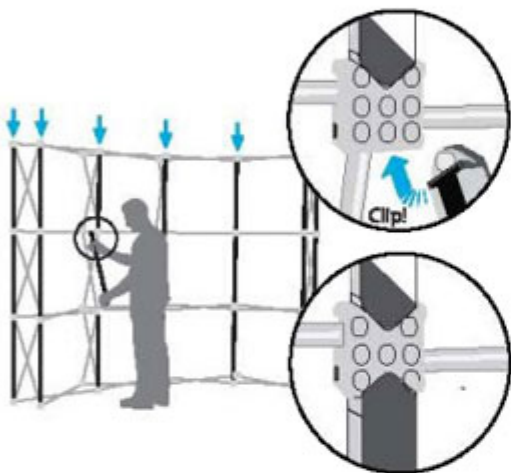
- 1, You will find all the needed components in the carrying case



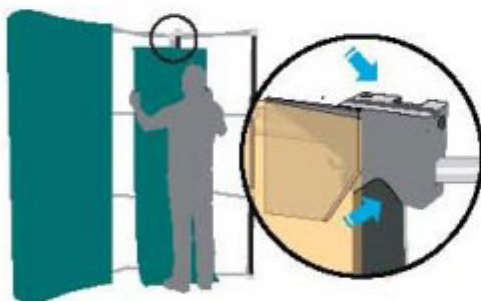
- 2, Remove frame, magnetic bars and the graphic panels from the carrying case



- 3, Place the frame on the floor with hubs with graphic hangers facing up and towards you. Grasp frame scissors and lift to expand frame



- 4, Apply the bars to all vertical quadrants on front side of the frame and to each end on back side of the frame. For a double sided frame, apply the bars also on the back side of the frame.



- 5, Hang the graphic panels on the top hub-hangers letting panels attach to bars. Do the same on both end-caps of the frame.

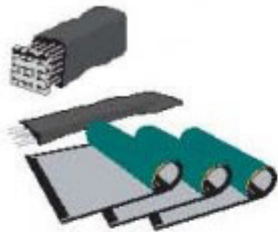


- 6, Close the transport case, put the black table top

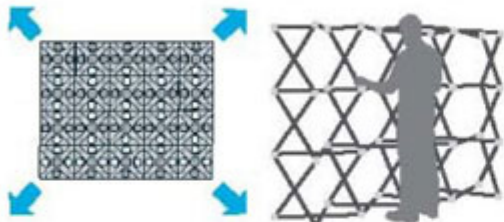
POP UP SYSTEM - SET UP INSTRUCTIONS



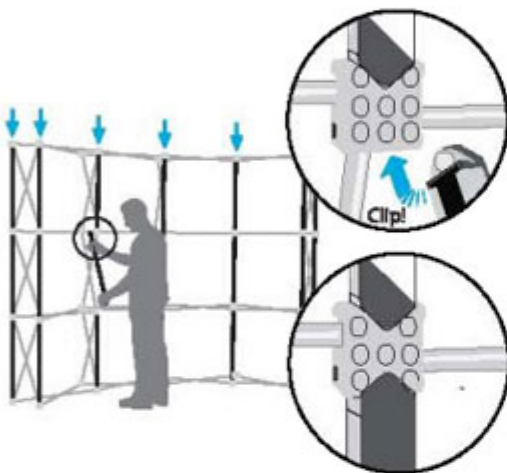
- 1, You will find all the needed components in the carrying case



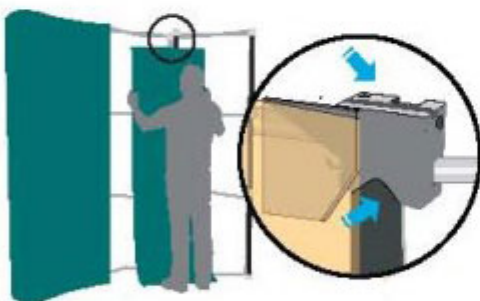
- 2, Remove frame, magnetic bars and the graphic panels from the carrying case



- 3, Place the frame on the floor with hubs with graphic hangers facing up and towards you. Grasp frame scissors and lift to expand frame



- 4, Apply the bars to all vertical quadrants on front side of the frame and to each end on back side of the frame. For a double sided frame, apply the bars also on the back side of the frame.



- 5, Hang the graphic panels on the top hub-hangers letting panels attach to bars. Do the same on both end-caps of the frame.



- 6, Close the transport case, put the black table top

Details

Material	Aluminum
Frame size	115" W x 87.5" H(292cm W x 222cm H)
Package size/ctn	28"x17"x39"(72x42x100cm)
G.W./ctn	84.5lb(38.4kg)
Graphic	Without
Shape	Straight
Frame size	10ft



Copyright © 1999-2012 by Beijing ChinaSigns Information Company Limited All Rights Reserved.

Email:info@sign-in-china.com Tel:+86 132 6410 3286 www.sign-in-china.com