



10ft Straight Fabric Display Wall (Double Sided Graphics Included)

Item Code: SIC-EDF-STD-43



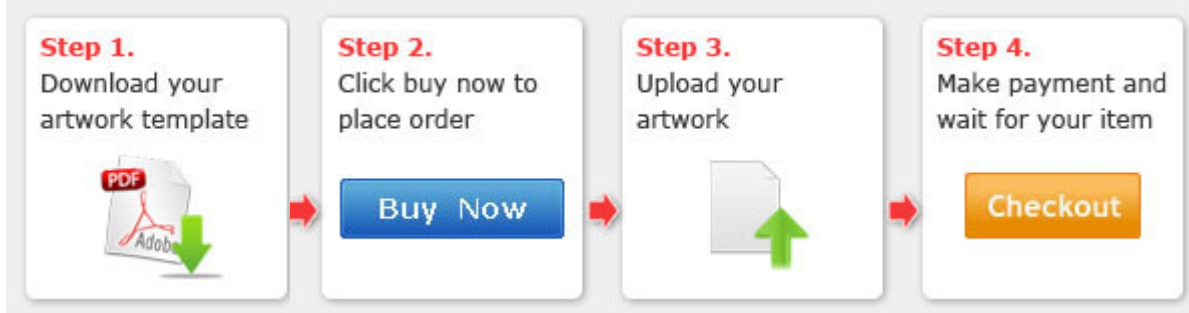
Mini Order: 1 pc

Average Rating: 1b (kg)

[Inquire Now](#)

Overview

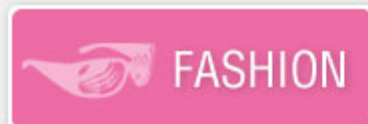
Easy 4 Steps to Custom Made Your Trade Show Displays:



[Artwork Guidance & Requirement Design Template](#)

Please exactly follow our artwork requirement in "PDF" tag. Especially all the fonts in the file need to be changed to outlines.

Description:



It is the latest design of international exhibit design master and be produced with the advanced processing equipments. It can be made into many rich and fashionable styles.



The weight is only one fifth compared with traditional pop up display products.



Aluminum tube system makes it very easy to assemple. Tension fabric pulls graphics tight and secures with zipper. Safety, quick and simple, no tools needed.

- Including customized graphic printing
- Very simple to transport
- Tubular framing snaps together in minutes. No additional hardware needed
- Seamless dye-sublimated fabric backwall-Straight Shape

This booth display is a great addition to any trade show presentation. The booth display, also known as banner stands, is printed from a user's submitted layouts. The custom signage goes through a dye-sublimation printing process on high stretch fabric. The resolution is 720 DPI, which results in a brightly colored and detailed exhibit. The stretchy material eliminates wrinkles when pulled taut. This booth display is constructed from an aluminum tube frame that sets up with a snap of a button. The trade show backdrop is therefore incredibly portable due to the knockdown design.

Dye-sublimation Process:



Tension Fabric Materials:



Features

1. Stretch, durable and wrinkle free
2. Brightly-colored, detailed and anti-uv
3. Washable and recyclable

4 Steps for assembly:



Step 1: Unpack the case then pull out large tube bag. Please keep frame & fabric clean



Step 2: Assemble frame following the symbol as shown above. Symbols will be on the back side of the tube. It is best to assemble with the frame lying flat and set up right after the fabric is attached.



Step 3: Stretch fabric over frame. Please use Gloves or clean hands and keep fabric away from dirty substance. Put fabric over frame and secure with zipper



Step 4: Stand unit upright.

Includes:

- .Aluminum Frame
- .Travel case
- .Double Sided Graphic Print



Trade Shows Sets:



Tags

[Fabric Display Wall](#)



Copyright © 1999-2013 by Beijing ChinaSigns Information Company Limited All Rights Reserved.

Email: info@sign-in-china.com Tel: +86 132 6410 3286 www.sign-in-china.com